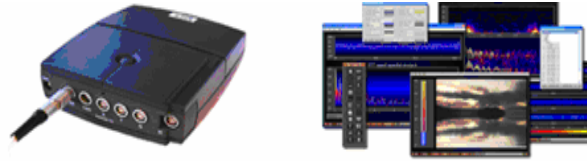


PC Requirements for NeXus-4/10/16/32 & BioTrace+ Software



Minimal PC hardware requirements:

The BioTrace+ software for the NeXus Physiological Monitoring and Feedback platform, will always require a PC or Notebook that runs the Microsoft Windows™ OS. Now follows a list of the minimal requirements for your computer.

- Windows™ XP Home with service pack 2 (**SP2**) or Windows Vista Home.
- At least a 1.4 Ghz AMD or Intel single core processor and CDROM drive
- 512 Mb of RAM memory (XP) but for Vista we advise 2 GB.
- 20 Gigabyte of free harddisk space. (for the software + physiological data)
- Soundcard
- 1 free USB port for the PC BlueTooth (N4/N10) or Fiber interface. (N16/.N32)
- 1 Graphics card with XGA (1024*768) resolution
- An Nvidia or ATI video accelerator (like Nvidia 6000/7000/8000 series)
- 15 Inch monitor

Recommended PC hardware requirements:

For optimal use we recommended a PC or Notebook with the following specs (or better):

- Windows XP Home with service pack 2 (SP2) or Windows Vista, 32 bit versions.
- Intel dual core 1.8 Ghz dual core processor or faster (2.0 to 3.0 Ghz)
- 2 GB of memory or more. (4Gb is maximum for 32 bit OS)
- 100+ GB free harddisk space for physiological data storage.
- A good soundcard.
- 2 Free USB ports. 1 for Bluetooth, 1 for an external video camera/webcam.
- Graphics accelerator hardware with dual monitor support. NVidia 7000/8000 series or better is recommended. Most Notebooks support dual monitors. *Note: a graphics accelerator ensures better results in graphics, video and dual monitor use.*
- Desktop computer: 17-22 Inch monitor: 1280x1024 or more on primary monitor. For the secondary monitor 1024x768 (XGA) resolution or more can be used.
- Notebook computer: 15 Inch monitor recommended. (1280x800 or more)
- An external harddisk (250 GB or more) or networked server for making backups
- A DVD drive for installation of software and for playing video.

iMac Computers:

- BioTrace+ runs only on an Windows™ based OS. However an iMac running Windows™ with Bootcamp or a recent version of Parallels (2008 or later) will in most cases run BioTrace+ very well. Older version of Parallels may have problems with BlueTooth.

For more information or technical support, you can contact:

Mind Media B.V. (Netherlands)
 Tel: +31-475-410123
 E-mail: support@mindmedia.nl
 Website: www.mindmedia.info

Note: we speak English, Dutch and German..